

GENERAL NOTES:

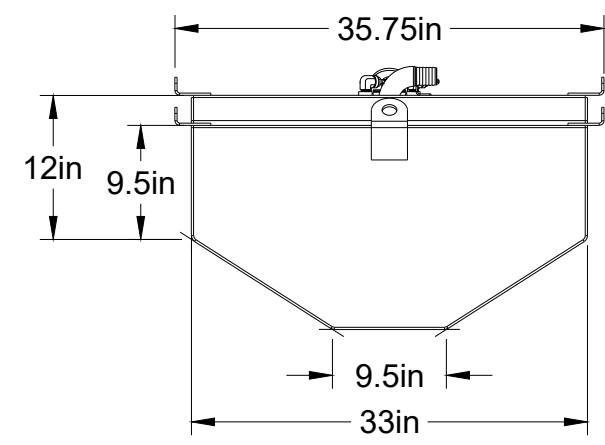
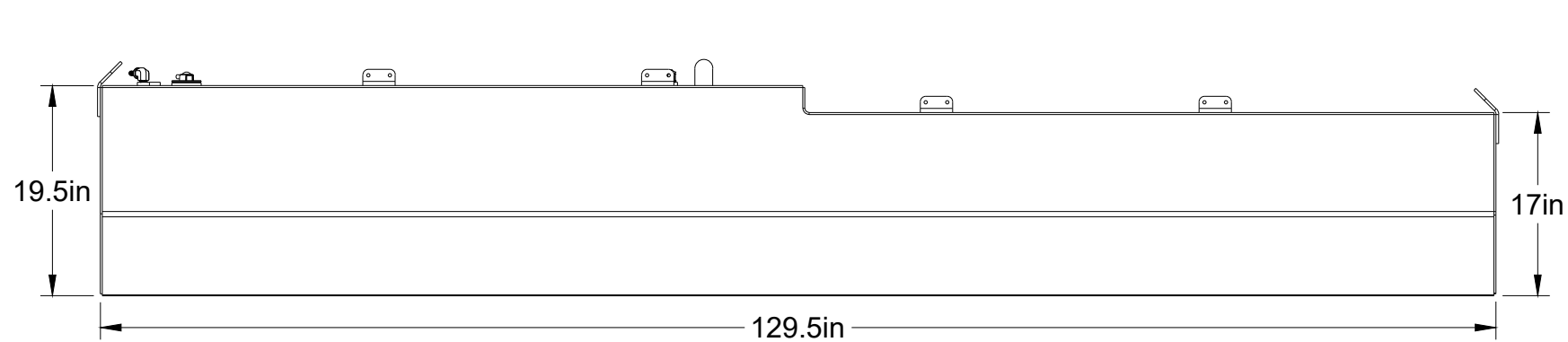
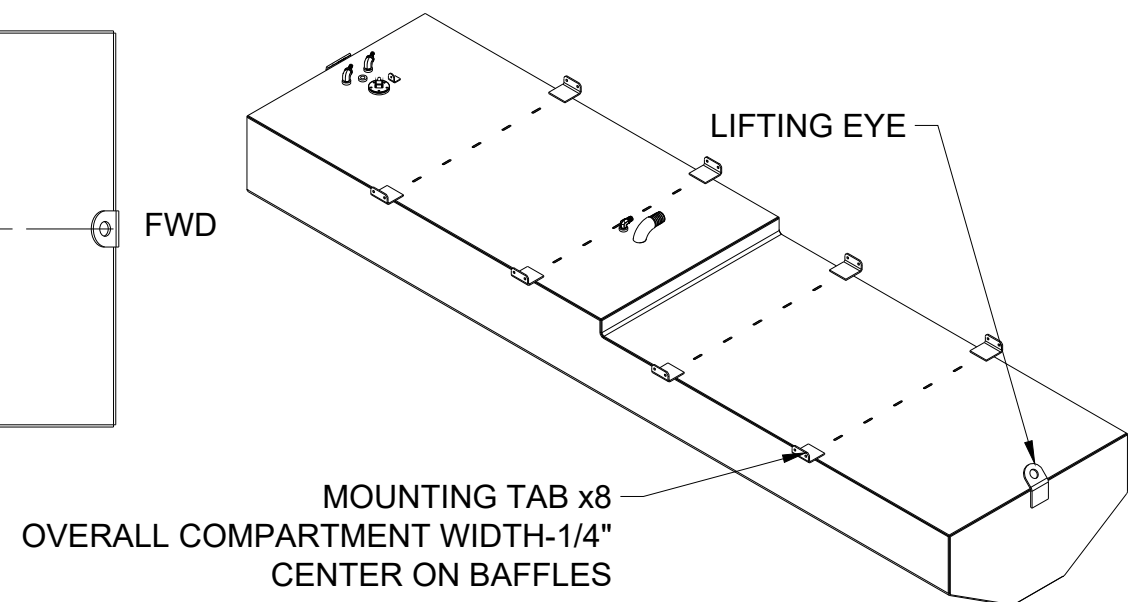
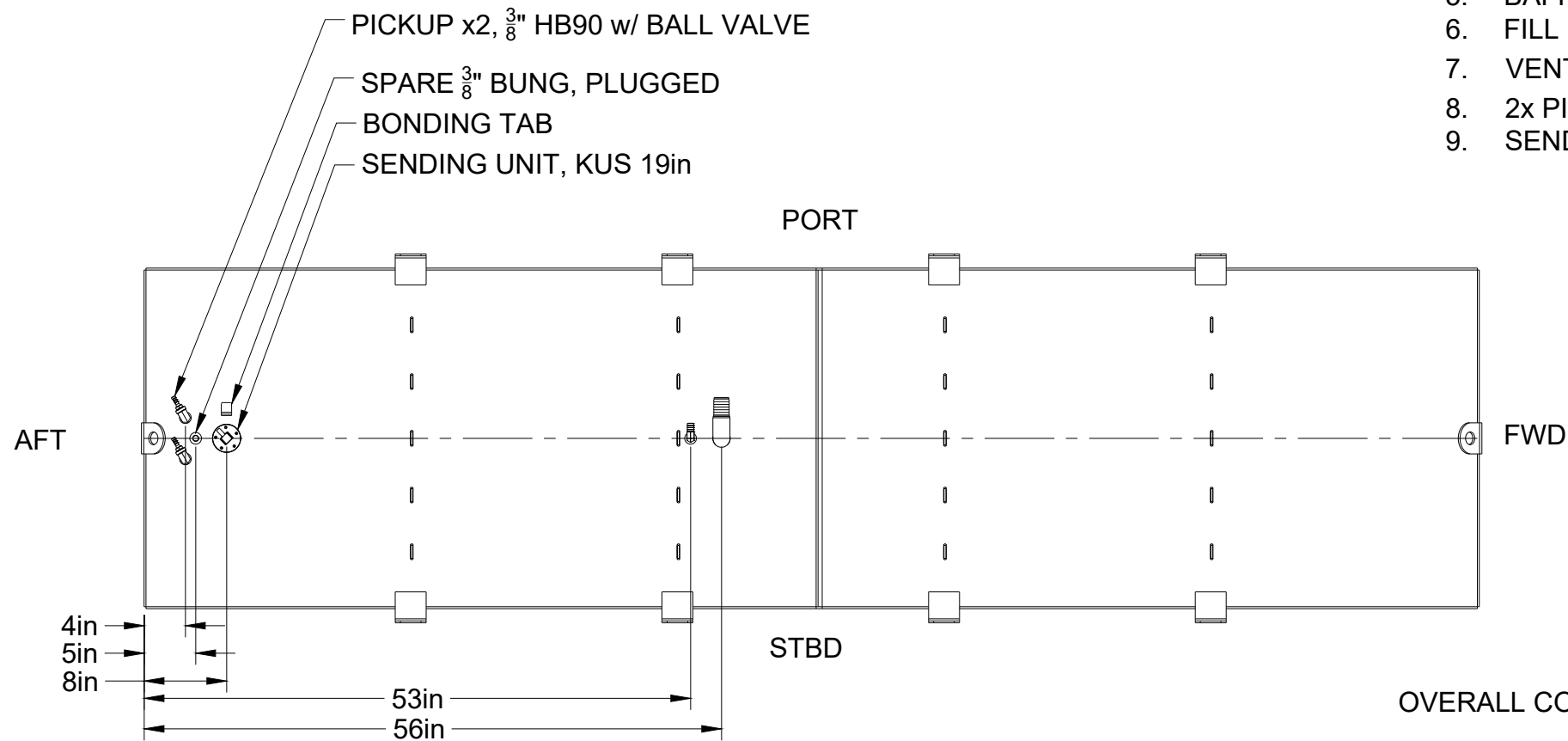
1. FINISH: MILL FINISH.
2. TOLERANCE ±0.1" OR 1x THICKNESS UNLESS NOTED.
3. DEBURR AND BREAK ALL CUT EDGES.

WELDING NOTES

4. WELD WITH 5356 AL FILLER WIRE.

TANK SPECIFICATIONS

1. DIMENSIONS OVERALL 129.5"L x 33"W x 19.5"D
2. MATERIAL: 0.19" 5052-H32 ALUMINUM
3. APPROXIMATE VOLUME: 280 GAL @ 100%; 252 GAL @ 90%
4. PRESSURE TEST TO 5 PSI PER 33 CFR 183.510(a)
5. BAFFLE: 4x TRANSVERSE
6. FILL 1.5" HOSE BARB 90
7. VENT $\frac{5}{8}$ " HOSE BARB 90
8. 2x PICKUP TUBE, $\frac{3}{8}$ " ID to $\frac{3}{8}$ " NPT ELBOW TO $\frac{3}{8}$ " HOSE BARB BALL VALVE
9. SENDING UNIT: KUS 19in REED STYLE SAE 5-HOLE



BOAT MODEL: 2003 DONZI 32' CENTER CONSOLE



PROJECT Fuel Tanks			WT 270 LB	
TITLE 9963 Fuel Tank - 2003 Donzi 32CC			REV	
SIZE B	SCALE 1:20	DWG NO 9963-1	DATE 8/22/2025	SHEET 1/2